

Uniclass L5367:P71	EPIC E482:X71
CI/SfB (71.3) Tn6	

V.2

# COBA



flooring

Your Project, Our Passion.



**ts** treadsafe  
distributors

[www.treadsafe.ie](http://www.treadsafe.ie)



*Make one change  
that your customers  
will notice.*

---

# PRODUCTS

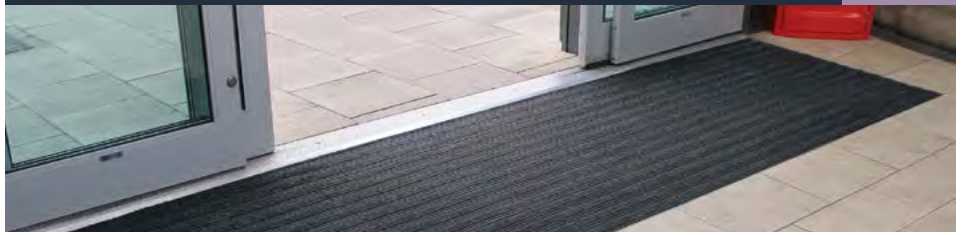
## Plan Range Aluminium Entrance Matting Systems

p.4 - 7



## Premier Range Entrance Matting Tile System

p.8 - 13



## PathMaster Range of Economical Aluminium and non-Aluminium Matting

p.14 - 17



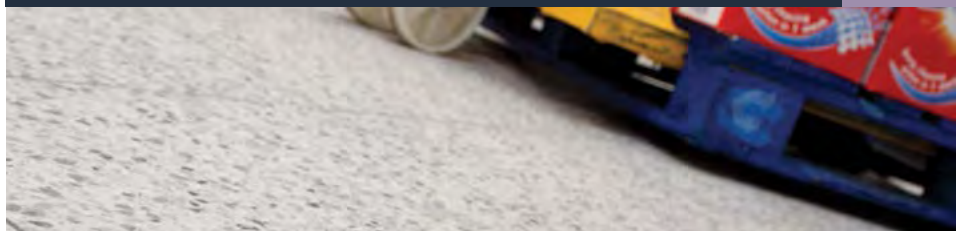
## Entrance Matting Carpets General Floor Coverings for Entrances

p.18 - 19



## Tough-Lock Tiles Interlocking Floor Tile System

p.20 - 21



## COBAGRiP Non-Slip GRP Flooring Products

p.22 - 23



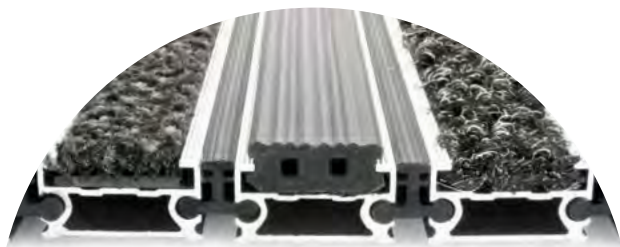


Available to  
Download from  
the NBS National

**BIM**  
LIBRARY

**Looking for  
the wow factor?**

The 'plan range' is a stylish collection of high performance, eco-friendly aluminium entrance systems available in an extensive choice of colours, designs and surface finishes.



## Plan.a

### Versatile aluminium entrance matting

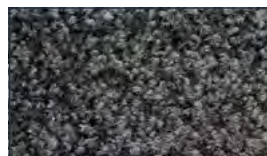
- Robust, high quality aluminium system for heavy duty use.
- Profile made using 30% recycled aluminium.
- Flexible, yet durable PVC linking joints for ease of handling/fitting.
- Three surface options available – 20mm strip inserts of either carpet, PVC scraper or brushes.
- Choose from one, or a combination of, surface options.
- Slip tested to BS 7976-2:2002 Pendulum Test.
- Custom made to order.

**Product Height:**

- Low Profile: 9mm
- Standard Profile: 17mm

#### Surface Options

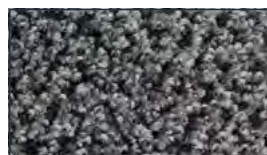
##### Alba - Premium Nylon Carpet



Anthracite



Blue

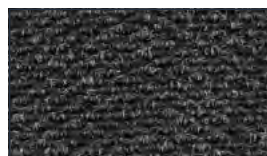


Grey

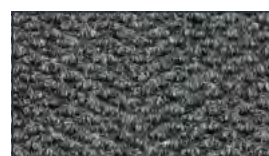


Brown

##### Needlepunch - Economical Polypropylene Carpet

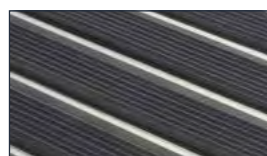


Charcoal



Grey

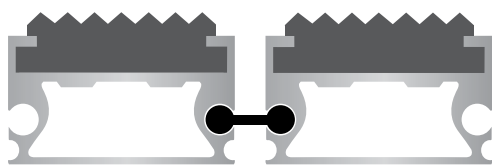
##### PVC Scraper



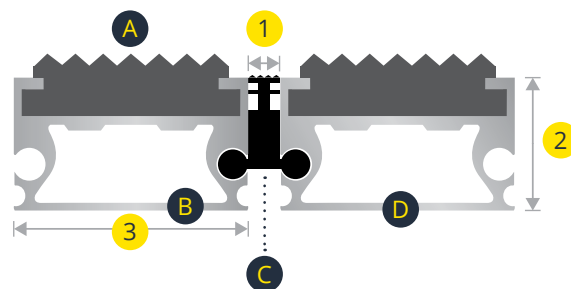
Black

## Standard Profile

Open Surface Profile



Closed Surface Profile



Custom-made-to-order, this is the 'perfect plan' for heavy duty commercial entrance areas.

## Material Key

<b>A</b>	Carpet / PVC inserts
<b>B</b>	Aluminium
<b>C</b>	Flexible PVC connector
<b>D</b>	Foam cushion

## Dimensions

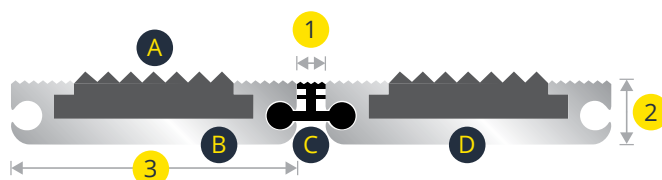
<b>1</b>	4mm
<b>2</b>	17mm
<b>3</b>	30mm

## Low Profile

Open Surface Profile



Closed Surface Profile



## Material Key

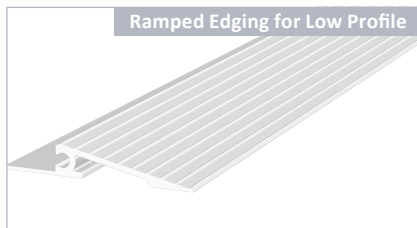
<b>A</b>	Carpet / PVC inserts
<b>B</b>	Aluminium
<b>C</b>	Flexible PVC connector
<b>D</b>	Foam cushion

## Dimensions

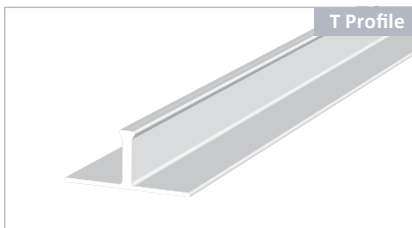
<b>1</b>	4mm
<b>2</b>	9mm
<b>3</b>	40mm

## Finishing Accessories

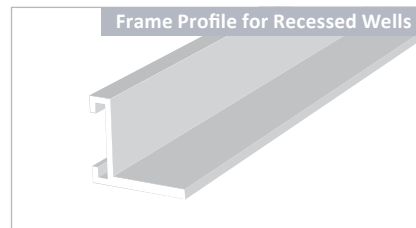
Ramped Edging for Low Profile



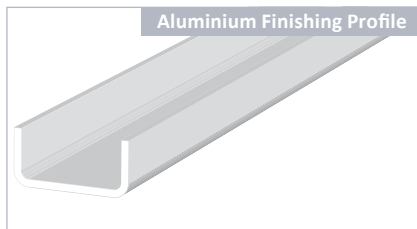
T Profile



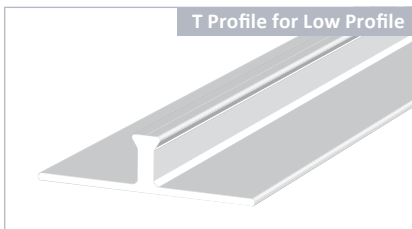
Frame Profile for Recessed Wells



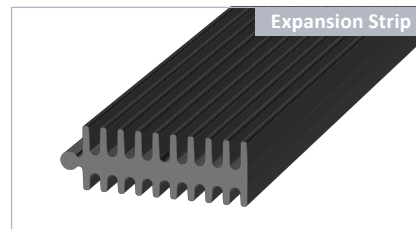
Aluminium Finishing Profile



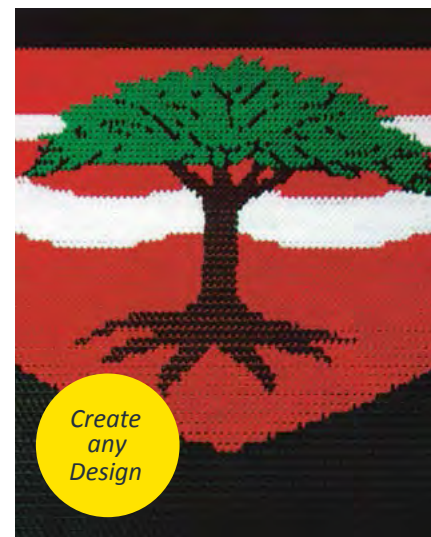
T Profile for Low Profile



Expansion Strip







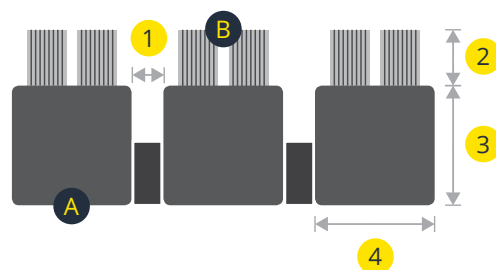
## Plan.b

High quality, stylish brush system for dirt control

- A combination of durable nylon brushes embedded in flexible 100% recycled PVC strips.
- Strips are linked via flexible, stainless steel wires.
- Brushes remove soil, grit and debris by 'brushing' the contour of shoes.
- Install in recessed matwells or lay to surface with optional edging.
- Suitable for indoor and outdoor use.
- Fire tested to: Cfl-S2.
- Custom made to order with a choice of 13 colour-ways and bespoke logo options.
- Production techniques allow for matting with curves, diagonals and angles.

Product Height: 22mm

Profile



Material Key

<b>A</b>	100% PVC
<b>B</b>	Nylon brushes

Dimension

<b>1</b>	4mm
<b>2</b>	7mm
<b>3</b>	15mm
<b>4</b>	15mm

Brush Colour Range

 Black (B01)	 Coir (B06)	 Dark Red (B011)
 Dark Grey (B02)	 Dark Green (B07)	 Red (B012)
 Light Grey (B03)	 Green (B08)	 Orange (B013)
 Brown (B04)	 Mint Green (B09)	
 Yellow (B05)	 Blue (B010)	

# Plan.c

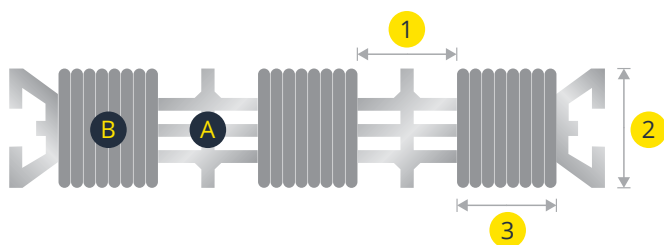
## Reversible closed surface aluminium entrance matting

- A robust aluminium system for high traffic entrances.
- Two surface options:
  1. Rubber profiles with nylon filaments.
  2. Rubber scraper profiles.
- Assembled in modules for easier transportation and installation.
- Profiles are connected via heavy duty steel wire.
- Suitable for indoor use.
- Fire tested to: Bfl-S1.
- Custom made to order.

Product Height: 18mm



Profile



Material Key

<b>A</b>	Rubber profile
<b>B</b>	Aluminium

Dimensions

<b>1</b>	15mm
<b>2</b>	18mm
<b>3</b>	15mm

Surface Options

Nylon Filaments



Grey



Black

Rubber Scraper



Black



*A range of quality interlocking tiles for commercial entrance areas, ideal for high volume footfall. Versatile, cost-effective and easy to install in recessed matwells. The PVC base tile in all options is manufactured from 100% recycled materials making the Premier range an environmentally-friendly choice.*

Available to  
*Download* from  
the NBS National

**BIM**  
LIBRARY





# Premier Grip

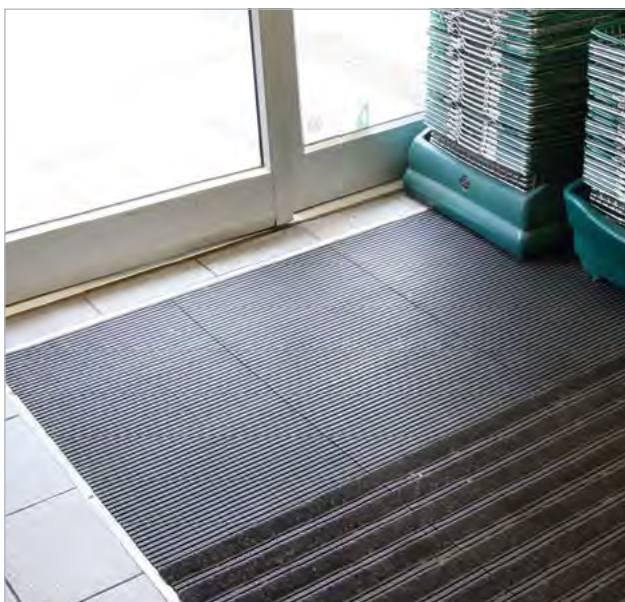
Scraper tile perfect for use alongside Premier Plus or Track

- 100% recycled PVC.
- Suitable for use indoors and outdoors.
- Dirt-scraping raised nodules.
- Small holes provide efficient drainage.
- Suitable for wheeled access.
- Easy to install, clean and maintain.
- Fire tested to EN13501 Euro Classification B(F1)S1.
- Links directly with Premier Plus & Premier Track tiles.

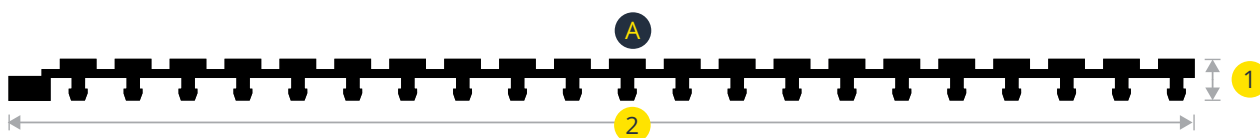
Product height: 12mm

## Tile Size

30cm x 45cm



Profile



## Material Key

**A** 100% recycled PVC

## Dimensions

**1** 12mm  
**2** 300mm



## Premier Plus

Interlinking tile with needlepoint carpet inserts

- Ideal for recessed entrance wells.
- Quality needlepoint carpet insert.
- Effectively scrapes dirt and wipes moisture.
- Links together to cover all floor sizes – indoor use.
- Move, clean or replace individual tiles with ease.
- Flexible - easily cut to shape.
- Fire tested to EN13501 Euro Classification E(F1).
- Tile base is colourfast to light: BS EN ISO 105 B02:1999.

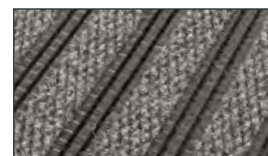
Product height: 18mm

### Surface Options

Needlepunch - Polypropylene Carpet

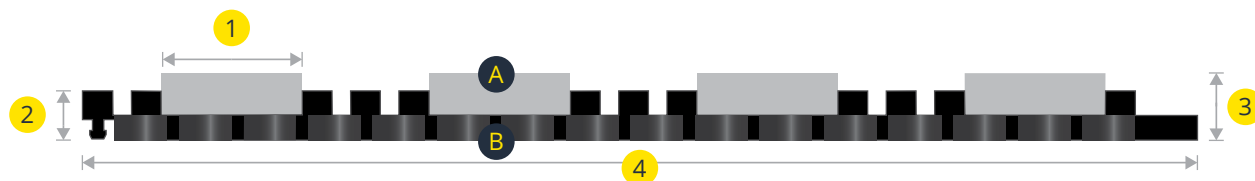


Charcoal



Grey

Profile



#### Tile Size

30cm x 45cm

#### Material Key

- A** Polypropylene carpet
- B** 100% Recycled PVC

#### Dimensions

- |          |      |          |       |
|----------|------|----------|-------|
| <b>1</b> | 38mm | <b>2</b> | 12mm  |
| <b>3</b> | 18mm | <b>4</b> | 300mm |

BIM





## Premier Track

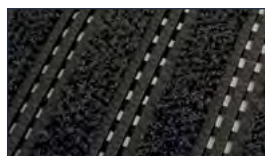
### Interlinking tile with nylon carpet inserts

- Heavy duty, premium quality.
- Ideal for recessed entrance wells.
- Crush-resistant nylon carpet insert.
- Effectively scrapes dirt and wipes moisture.
- Suitable for wheeled trolleys.
- Safe for high heeled footwear.
- Move, clean or replace individual tiles with ease.
- Fire tested to EN13501 Euro Classification B(F2)S2.
- 'Low Slip Potential' in both wet and dry conditions when tested to BS 7976-2:2002.

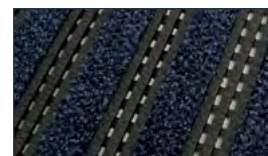
Product height: 16mm

#### Surface Options

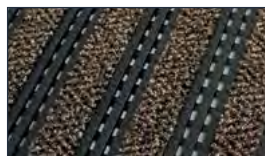
Alba - Nylon Carpet



Anthracite



Blue

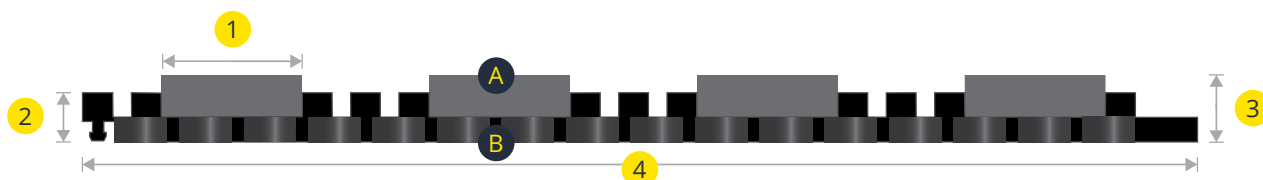


Brown



Grey

Profile



#### Tile Size

30cm x 45cm

#### Material Key

- A** Nylon carpet
- B** 100% Recycled PVC

#### Dimensions

- |          |      |          |       |
|----------|------|----------|-------|
| <b>1</b> | 38mm | <b>2</b> | 12mm  |
| <b>3</b> | 16mm | <b>4</b> | 300mm |

BIM





*Busy commercial entrances demand effective barriers to stop dirt and moisture entering the building. A successful entrance matting system will reduce both cleaning costs and slip hazards. The innovative recycled PVC tile of the Premier Range has been designed as a cost-effective way to achieve this.*

## Premier Surface

### No need for a matwell

- Interlocking entrance tiles designed to be laid to surface.
- Does not require a matwell.
- Solid surface tiles effectively capture dirt to protect interior floors.
- Hardwearing nylon carpet inserts scrape dirt and wipe moisture.
- PVC base tile is manufactured from 100% recycled materials.
- Suitable for high volume footfall in commercial locations.
- Optional 'impact-resistant' bevelled edges and corners withstand heavy shopping trolleys.
- Co-ordinating Alba carpet can also be supplied in rolls for primary and secondary dirt barrier use.
- 'Low Slip Potential' in both wet and dry conditions when tested to BS 7976-2:2002.
- Load tested to 1,000 kg. This means that these tiles can withstand supermarket supply trolleys.

Product height: 9mm

#### Tile Size

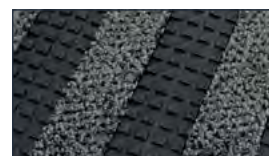
30cm x 30cm

#### Surface Options

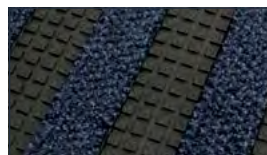
##### Alba - Nylon Carpet



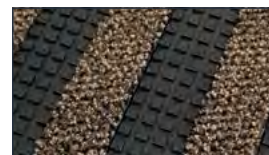
Anthracite



Grey



Blue



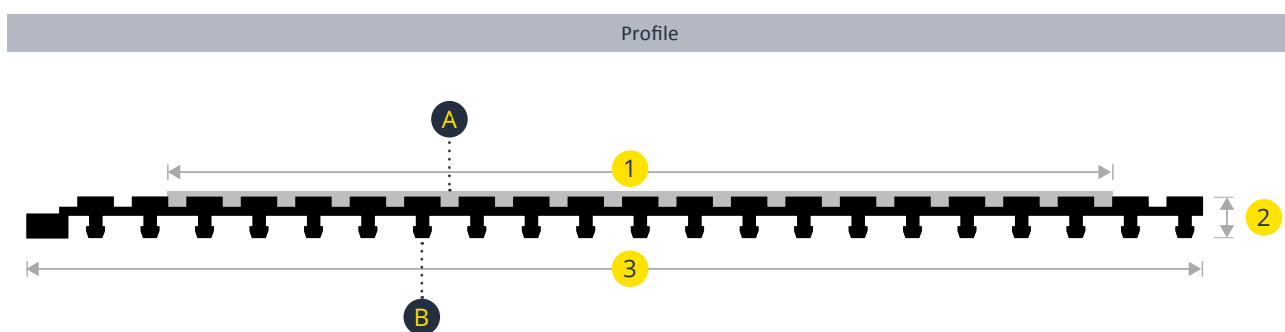
Brown

##### No Carpet



Black





Material Key		Accessories	Dimensions	
A	Nylon carpet insert	Edging: 78mm x 2.0m lengths	1	260mm
B	PVC tile	Corners: 100mm x 100mm	2	9mm
			3	300mm





PathMaster is simple to clean and has a fully closed surface, preventing dirt getting underneath.

The combination of aluminium and carpet makes for a light system that is easy to install.

## PathMaster

A cost-effective, more versatile alternative to traditional aluminium systems

- Polypropylene needle rib with polyamide brushes and aluminium scraping inserts.
- Solid surface prevents debris falling through.
- Supplied on flexible rolls of up to 10m lengths in 1m or 2m widths – simply butt tightly together for desired width.
- Install in recessed wells or glue to the floor surface with optional bevelled edging.
- Cut to size and shape, on site if necessary, using a hand grinder or jigsaw.
- Anti-slip latex backing.
- Flammability tested - Class E.

Product Height: 13mm  
Product Weight: 4.5 Kg/m<sup>2</sup>

### Sizes

10m lengths (or by per linear metre) in 1m or 2m widths.  
Larger widths available up to 3m.

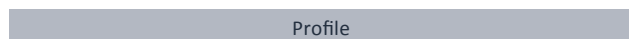
### Colour Options



Anthracite



Blue



Material Key	
A	Tufted nylon
B	Aluminium

Dimensions	
1	13mm





# PathMaster Budget

The most budget-conscious entrance matting available to feature aluminium

- 100% Polypropylene needlepunch carpet with aluminium scraping inserts.
- Supplied on flexible rolls of up to 10m lengths in 2m widths – simply butt tightly together for desired width.
- Install in recessed wells or glue to the floor surface with optional bevelled edging.
- Cut to size and shape, on site if necessary, using a hand grinder or jigsaw.
- Anti-slip latex backing.

Product Height: 13mm  
Product Weight: 6 Kg/m<sup>2</sup>

## Sizes

10m lengths (or by per linear metre) in 2m widths.

*Aluminium  
does not have  
to cost the earth  
or be a headache  
to install.*



## Colour Options (Delivery 5 working days)



Charcoal



Grey



## Colour Options (Delivery 15 working days)



Beige



Brown



*An economical alternative to aluminium entrance matting.*

## PathMaster Duo

### Functional matting with a contemporary design

- Similar to PathMaster in appearance, but being aluminium-free means that PathMaster Duo is a really cost effective option.
- Solid surface prevents debris falling through.
- Supplied on flexible rolls of up to 20m lengths in 2m widths – simply butt tightly together for desired width.
- Install in recessed wells or glue to the floor surface with optional bevelled edging.
- Cut to size and shape, on site if necessary, using a hand grinder or jigsaw.
- Anti-slip latex backing.

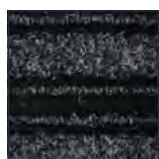
Product height: 13mm

#### Sizes

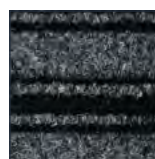
2m wide x per linear metre

Maximum length 20m

#### Colour Options



Charcoal



Grey



*It's possible to enhance any one of COBA Flooring's Entrance Matting Systems with a custom printed logomat. Replicate any logo or slogan in up to 6 colours.*



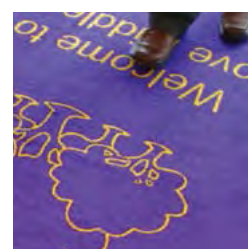
## Logo Entrance Matting

Communicate your brand - right from the off

- Creates an impressive entrance featuring a customised logo or message for instant brand recognition.
- Select up to 6 colours from a standard range of 40 to create the design.
- Pantone® colour matching available for a surcharge if desired.
- Durable solution-dyed nylon surface tufted into a non-woven polyester.
- Soft carpet pile retains moisture, holding up to 2.5 litres water/m<sup>2</sup>.
- 11 year warranty against fading.
- Standard sizes are machine washable for easy care.
- Product height is matched to surrounding matting product.
- Made in the UK.

### Size

Bespoke Sizes available on request







#### Sizes

2m x 30m roll

2m x per linear metre

#### Colour Options



Blue



Charcoal



Grey



Brown

## Toughrib Contract

### Ribbed entrance matting on a roll

- A popular choice for flooring contractors requiring versatile rolls of entrance carpet.
- Ribbed surface not only looks smart, but is designed to scrape dirt and wipe moisture.
- Debris and moisture is captured in the ridges and easily vacuumed.
- 100% polypropylene pile is durable and suitable for heavy duty use.
- Primary (latex) and secondary (gel foam) backing.
- Can be used in recessed matwells or on pedestrian walkways.

Pile height: 4.5mm  $\pm$  10%

Overall height: 7.5mm  $\pm$  10%

Product weight: 1350g/m<sup>2</sup>  $\pm$  10%

## Toughrib Diagonal

### Heavy duty diagonally ribbed matting

- Premium quality, heavy duty entrance matting featuring attractive diagonal ribbed design.
- Supplied in rolls of up to 25m or in cut linear metre lengths.
- 100% solution dyed UV stabilised polypropylene fibres for rigorous scraping performance.
- Features a robust duo rubber backing.
- Flammability: EN13501 Euro Classification Ef1.
- CE approved to EN14041:2004.
- Dry slip tested to EN14401:2004.

Pile height: 4mm

Overall height: 8.2mm

#### Sizes

2m x 25m roll

2m x per linear metre

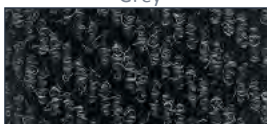
#### Colour Options



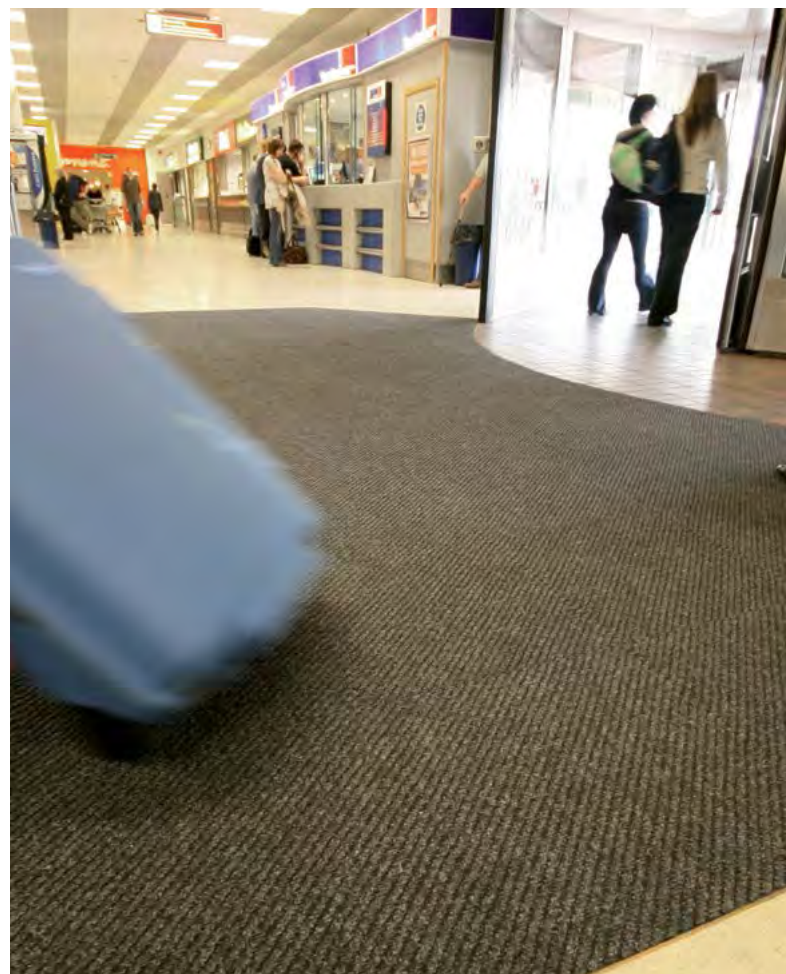
Grey



Blue



Charcoal







## Alba

### Premium nylon entrance matting carpet

- Impressive and exceptionally durable nylon carpet.
- Ideal for high volume entrance areas, such as walkways and corridors.
- Nylon pile is highly absorbent and also withstands crushing.
- An effective way to protect interior floor surfaces.
- Available with optional edging depending on the requirements of the application.
- Suitable for glue down, wall to wall, or floor surface applications.

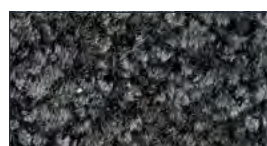
Product height: 9.2mm

#### Sizes

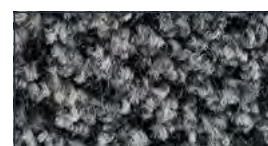
1m x per linear metre

2m x per linear metre

#### Colour Options



Charcoal



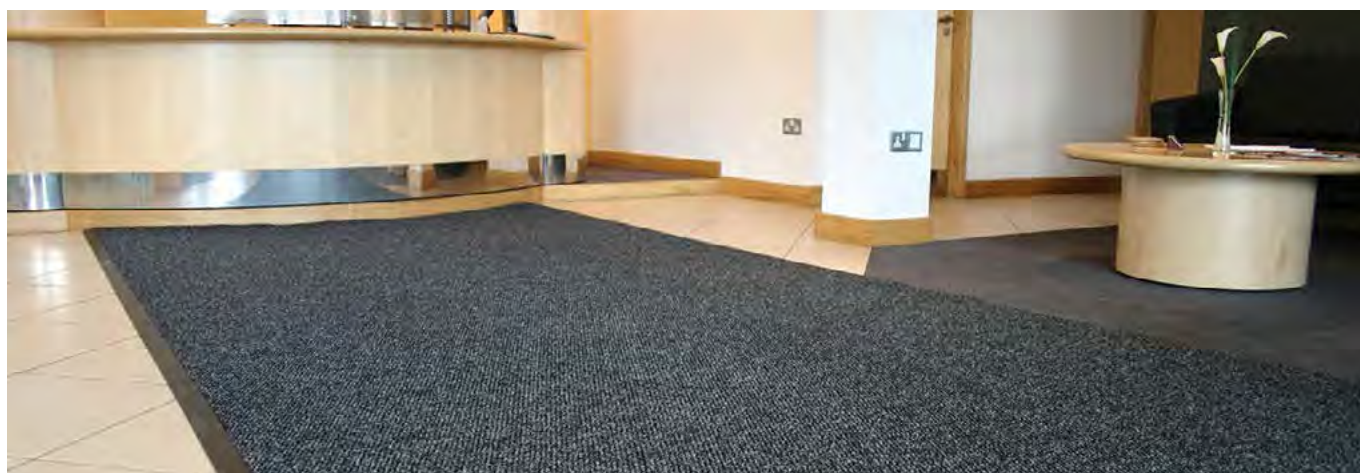
Grey



Blue



Brown



## Needlepunch

### Versatile needlepunch entrance matting carpet

- Textured polypropylene fibres provide outstanding scraper action.
- Popular for both interior walkways and reception areas providing a total dirt-barrier solution.
- Also frequently used in recessed matwells in entrance areas.
- Available with optional edging.
- Suitable for glue down, wall to wall, or lay to surface applications.

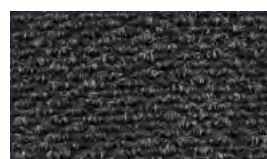
Product height: 10.8mm  
Product weight: 2.5kg/m<sup>2</sup>

#### Sizes

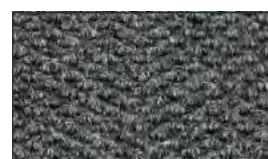
1m x per linear metre

2m x per linear metre

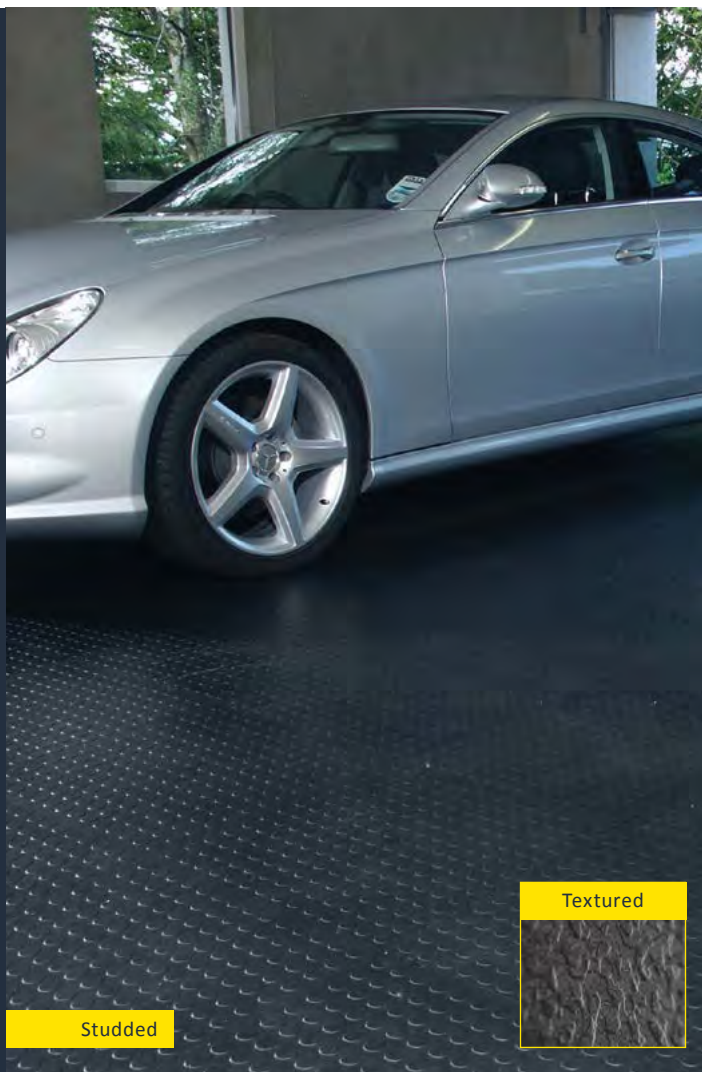
#### Colour Options



Charcoal



Grey



## Tough-Lock

### A smart solution for floor refurbishment

- Smart interlocking tile manufactured from resilient PVC.
- Available in two finishes – Studded and Textured.
- Effective for refurbishing floors, such as covering damaged surfaces.
- Suitable for heavy and light industrial use, as well as commercial locations.
- Can withstand the weight of most forklift trucks.
- Tile system simply interlocks for easy installation.
- Available in Anti-Static and ESD versions on request.
- Bevelled edging available.

Product height: 5mm & 7mm

#### Sizes

Tile 500mm x 500mm

Bevelled edge 500mm (x4)

Bevelled Corner Edge 585mm (x4)

#### Colour Options



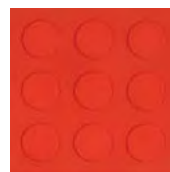
Black



Grey



Blue



Red



Yellow



Green

## Tough-Lock Eco

An economical floor covering made from 100% recycled materials

- Smart interlocking tile manufactured from 100% recycled PVC.
- Studded surface design.
- Effective for refurbishing floors, such as covering damaged surfaces.
- Suitable for heavy and light industrial use, as well as commercial locations.
- Can withstand the weight of most forklift trucks.
- Tile system simply interlocks for easy installation.
- Bevelled edging available.

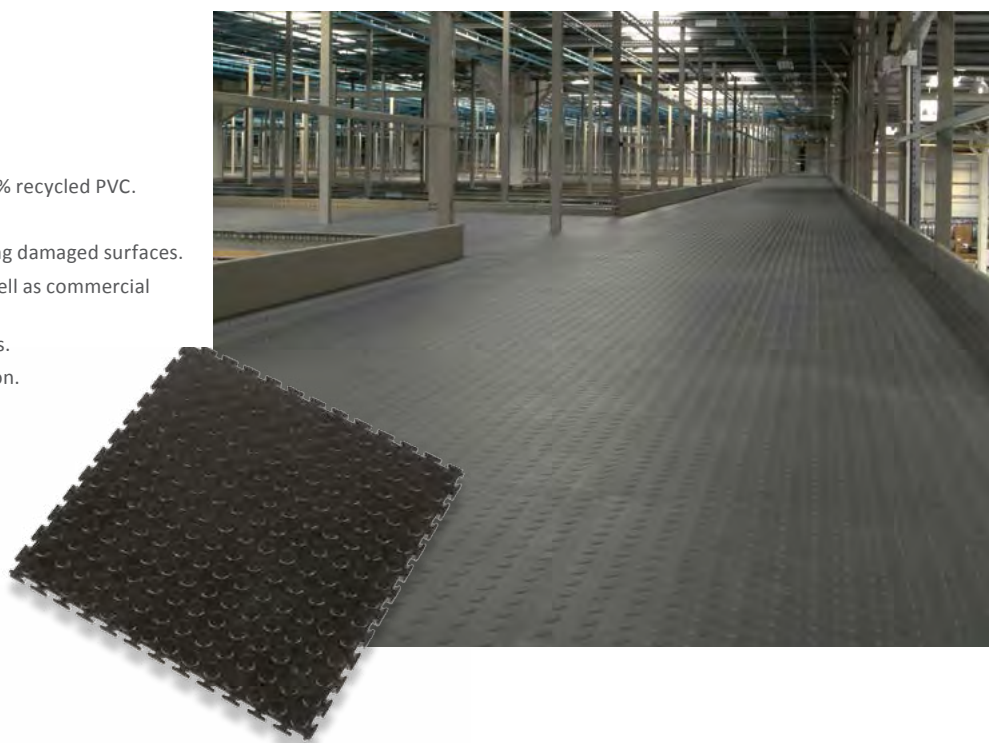
Product height: 5mm

#### Sizes

Tile 500mm x 500mm

Bevelled edge 500mm (x4)

Bevelled Corner Edge 585mm (x4)





**NEW**  
for 2014

Terrazzo

Looks like  
ceramic,  
performs like  
vinyl.

**Tough-Lock Tiles**

Volcano

## Tough-Lock Naturals

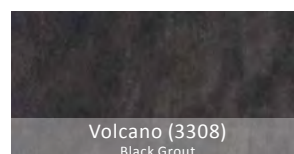
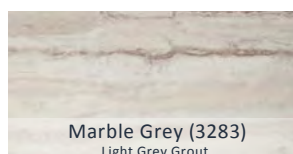
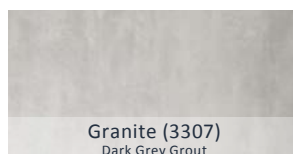
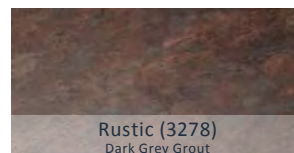
Looks like ceramic but performs like vinyl

- Patented new generation of robust, hidden interlocking, loose lay LVT.
- Loose lay - No adhesive required.
- Install in a shorter period of time - No need to interrupt daily business activity - No loss of revenue.
- Available in modern designs and with unique colour matching moulded grout edging.
- 0.7mm wear layer with PU.
- Robust hidden interlock - Suitable for wheeled traffic up to 1,000kg.
- High dimension stability - Heterogeneous construction with glass fibre reinforcement.
- Product height: 7.5mm

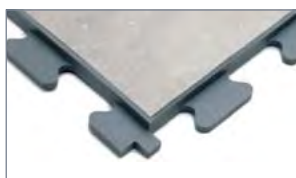
### Tile size

450mm x 450mm (inc. 2mm grout edging)

### Surface Design Options



### Grout Edging Colours



Dark Grey



Light Grey



Black

### Finishing Profile







The  
ultimate  
non-slip  
flooring



COBAGRiP is a range of UV stabilised GRP sheets, treads and stair nosing designed to offer exceptional levels of slip-resistance both indoors and out, while having outstanding wear and tear qualities. It is an ideal underfoot safety solution for pedestrian and factory walkways, access ramps, gangways and bridges.

The Silicone Carbide 'gritted' top surface provides effective underfoot grip and is resistant to most solvents and chemicals. It is manufactured using flame retardant materials. Easy to install, simply bond or screw to the existing floor surface, COBAGRiP is a cost-effective means of refurbishing damaged or slippery floors. Easy to clean (pressure wash).

## COBAGRiP Sheet

- Ideal solution for slip hazards such as spilt liquids or ice.
- Available in a range of colours to meet all DDA requirements.
- Suitable for use with forklift traffic.
- Simply bond or screw to the existing floor surface.
- Colour options: black, grey and yellow.

Product height: 3mm GRP base overall 5mm



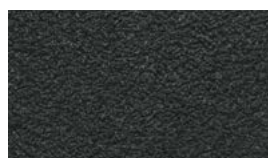
## COBAGRiP Light

- Manufactured from a 1mm flexible GRP sheet.
- Ideal for use on undulating surfaces.
- Can also be used in food production areas.
- Colour options: black and grey.

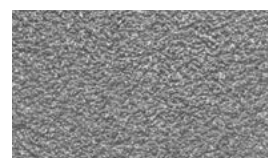
Product height: 1mm GRP base overall 2.4mm

### Sizes

1.2m x 1.2m  
1.2m x 2.4m



Black



Grey



Yellow

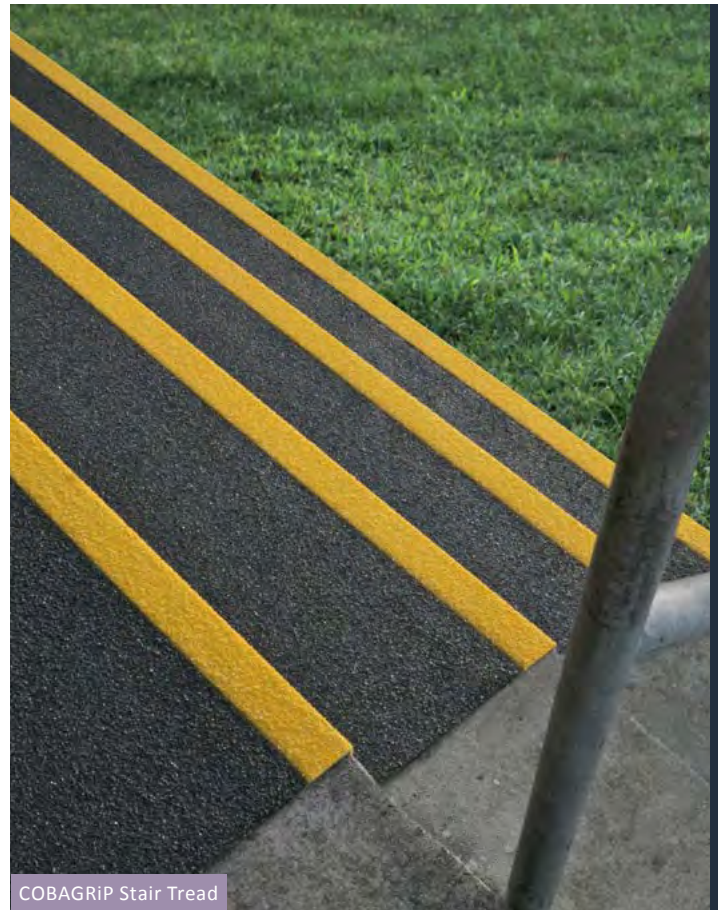


## COBAGRiP Stair Tread

- Silicone Carbide surface helps to prevent slip accidents on stairs.
- Designed to fully cover the stair area.
- 345mm x 55mm contrasting coloured nosing meeting DDA requirements.
- Can be used in conjunction with COBAGRiP Sheet.

Product height: 3mm GRP base overall 5mm

Dimensions	Lengths
345mm x 55mm	1m
	1.5m
	2m
	3m



COBAGRiP Stair Tread



COBAGRiP Stair Nosing

## COBAGRiP Stair Nosing

- Designed to help prevent slips on stairs.
- Suitable for use on existing or new-build steps.
- Manufactured with chamfered back edge for additional safety.
- Bright colour for visibility meeting DDA requirements.

Product height: 3mm GRP base overall 5mm

Dimensions	Lengths
55mm x 55mm	1m
	1.5m
	2m
	3m





*We  
take our role in  
the flooring industry  
seriously, and we work  
in partnership with our  
customers to continually  
improve our products and  
service. That's why we're  
proud members of  
the CFA.*

